

Failing Scrutineering

Summary of the most important failures to comply with FIA technical and safety regulations.

Contact us for any information at: info@rallygreeceoffroad.gr

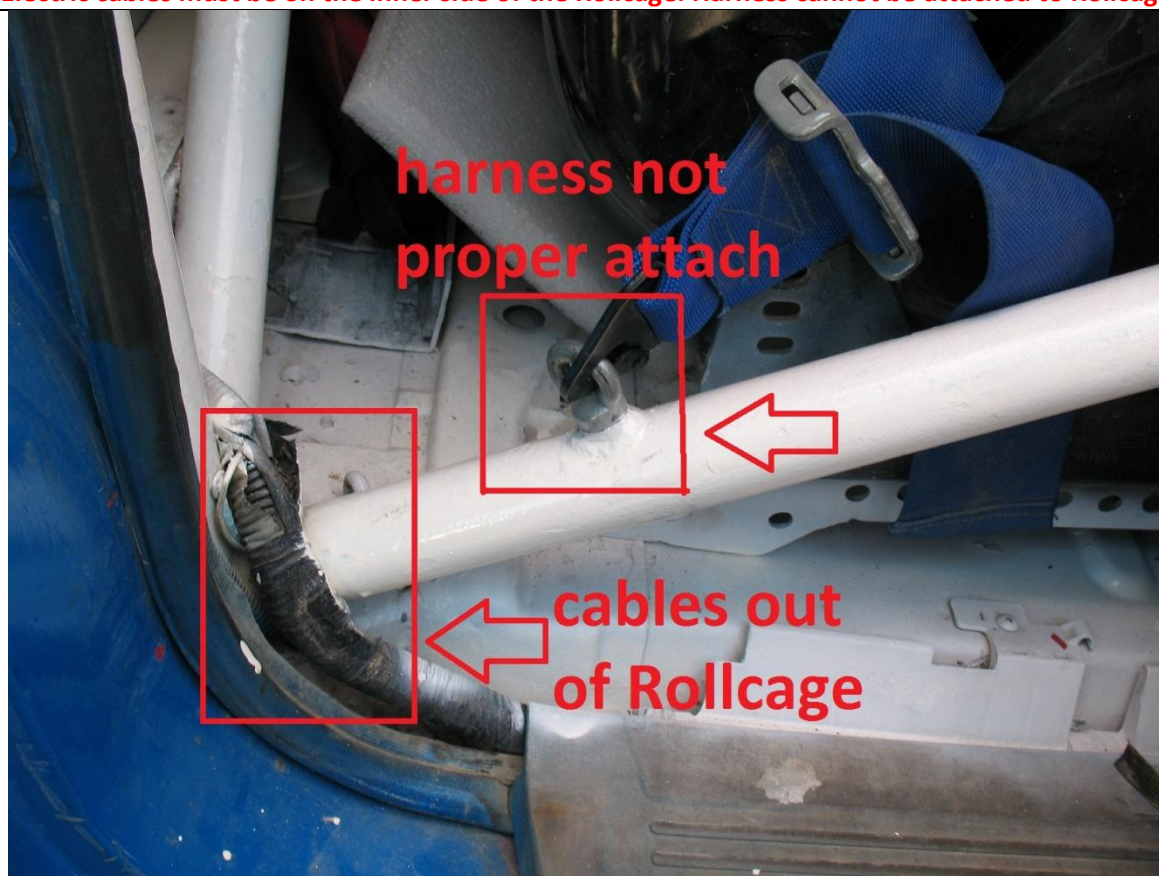
Roll Cage poor weld in



Seat Mounting base must have separate plates on and under the floor



Electric cables must be on the inner side of the Rollcage. Harness cannot be attached to Rollcage



Seat mounting base cannot be attached to Rollcage



**not correct seat
mounting base**

Engine air intake pipe cannot be directed inside cockpit



**engine air
intake not
allowed in
cockpit**

Fuel Tank and Fuel intake cup not allowed inside cockpit. Only FIA Fuel Tanks are allowed

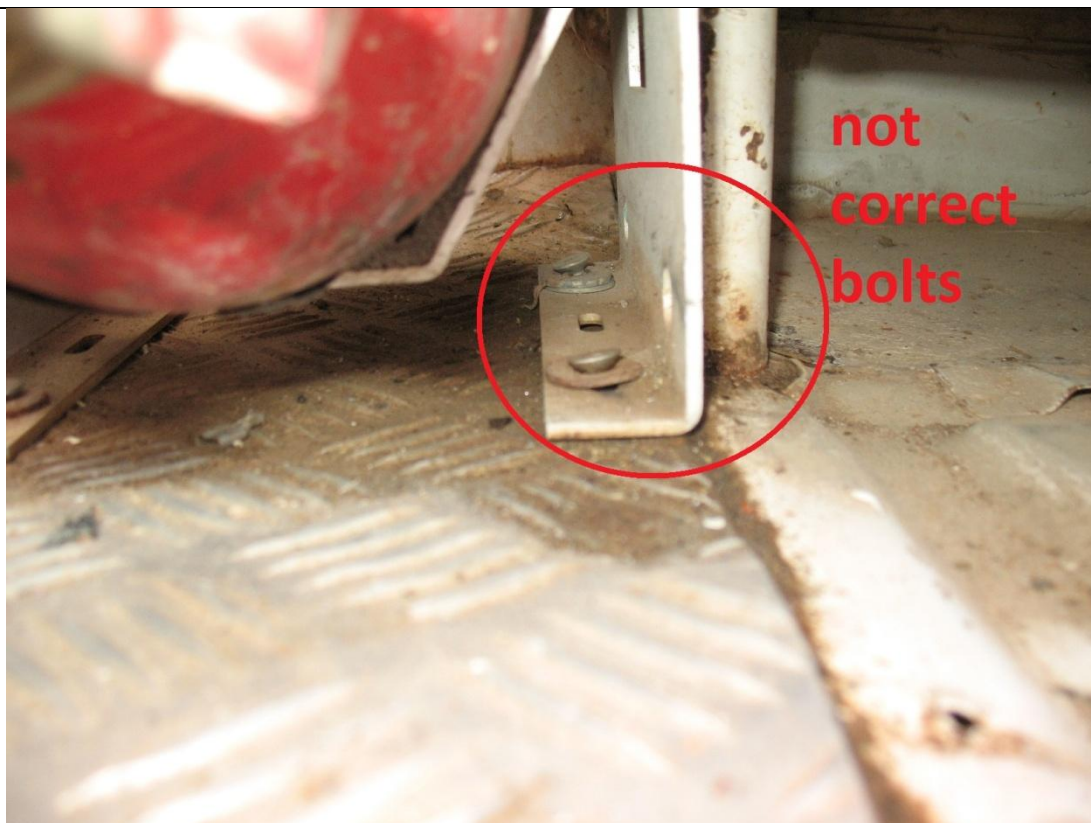
inside cocpit. Otherwise, original Fuel Tank in the original position.



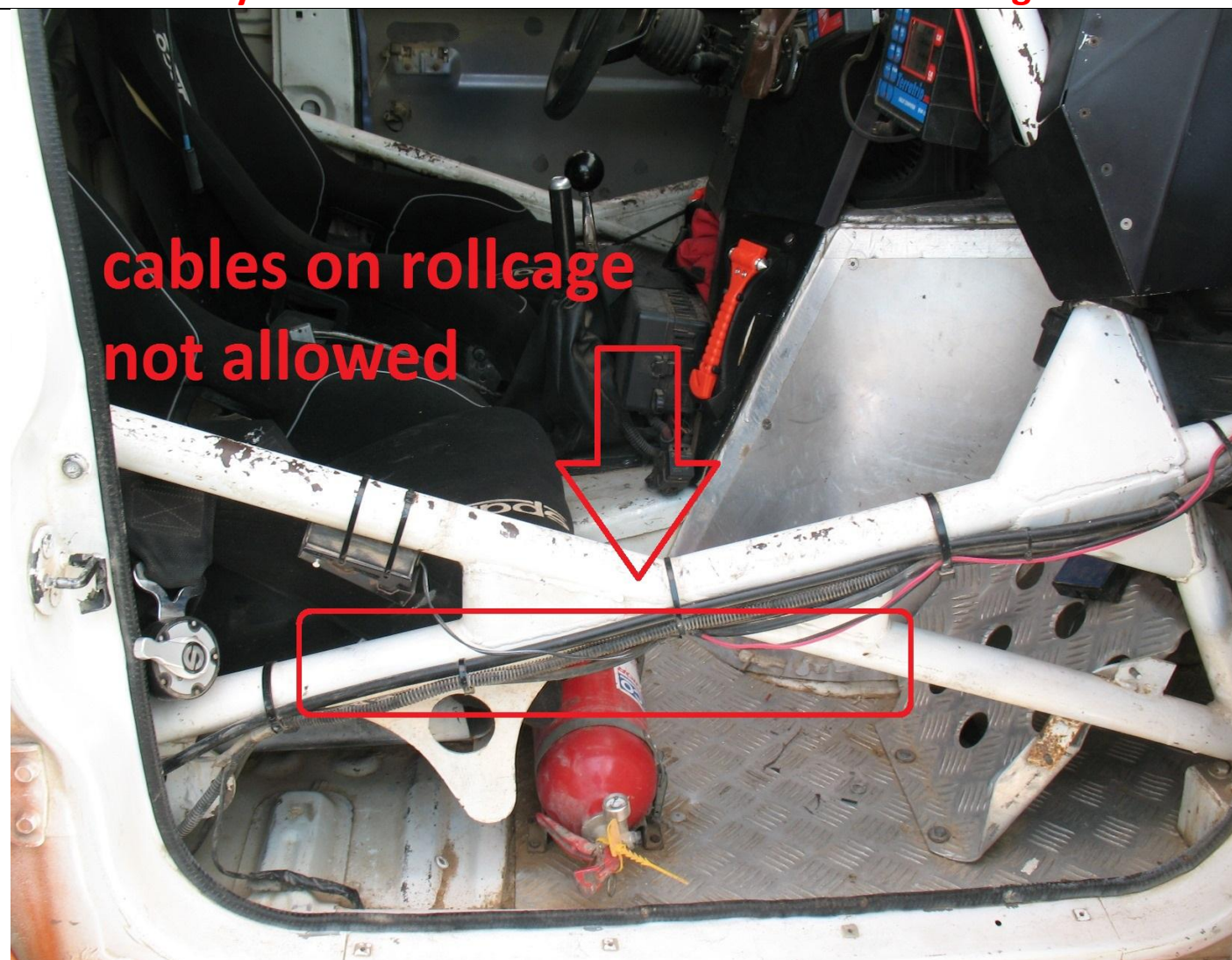
Not correct Seat mounting base



Not correct Seat mounting base



Any kind of cables cannot be attached to Rollcage



Rollcage connections not according to FIA regulations

**not correct
rollcage join**



Rollcage connections not according to FIA regulations

**not correct
rollcage join**



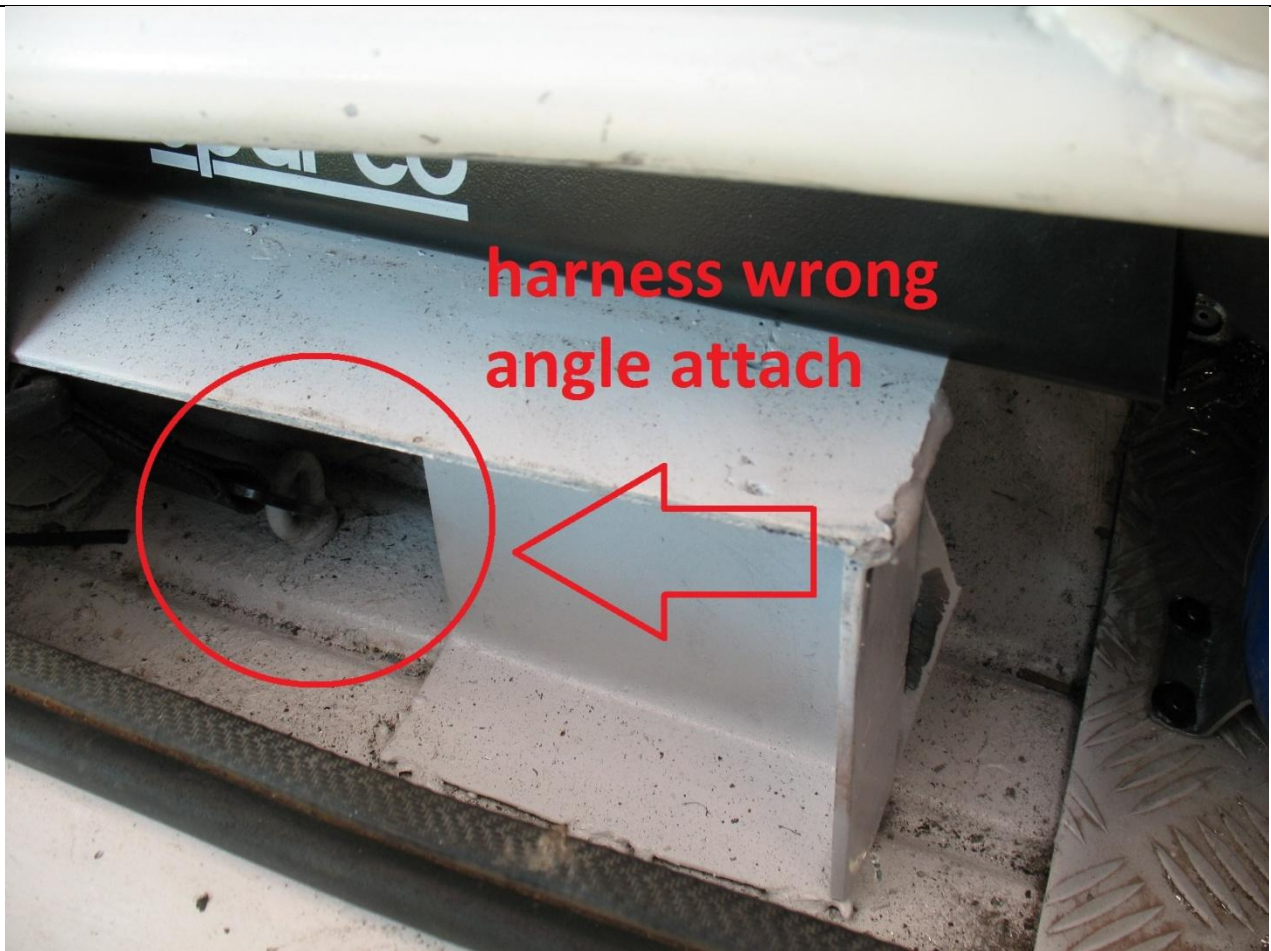
Not correct Seat mounting base



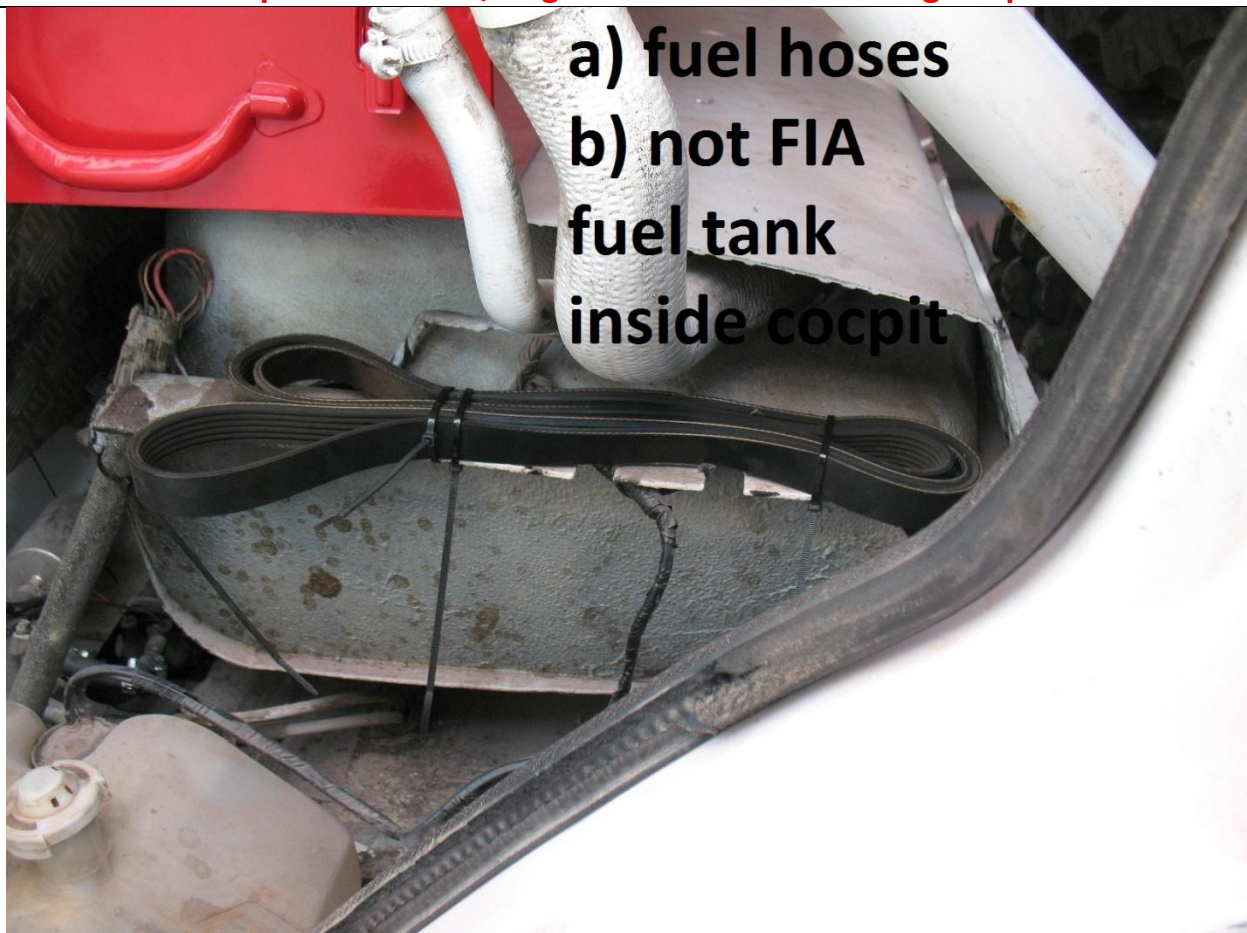
Front – Rear Bumpers must comply with International Traffic Regulation



Harness attachment in wrong position and angle



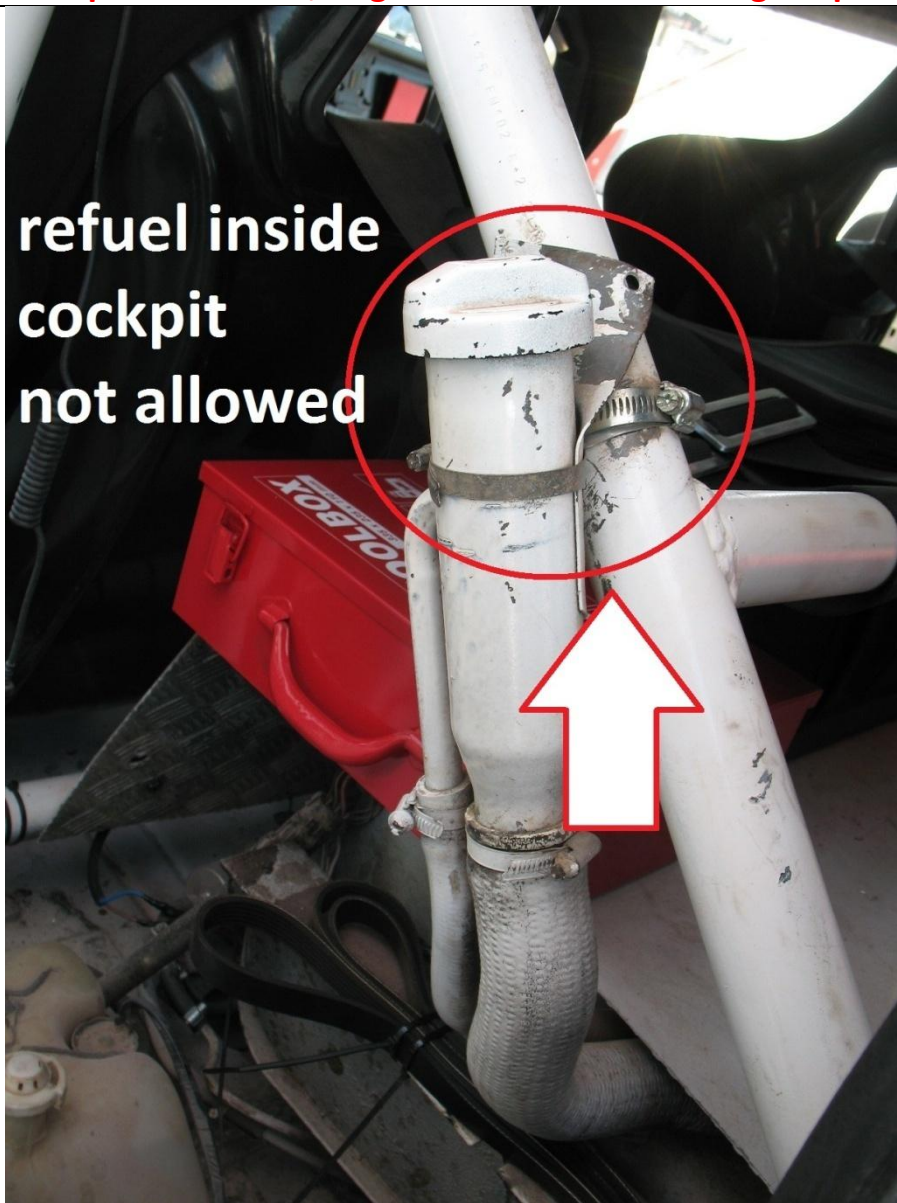
Fuel Tank and Fuel intake cup not allowed inside cocpit. Only FIA Fuel Tanks are allowed inside cocpit. Otherwise, original Fuel Tank in the original position.



Fuel Tank and Fuel intake cup not allowed inside cocpit. Only FIA Fuel Tanks are allowed

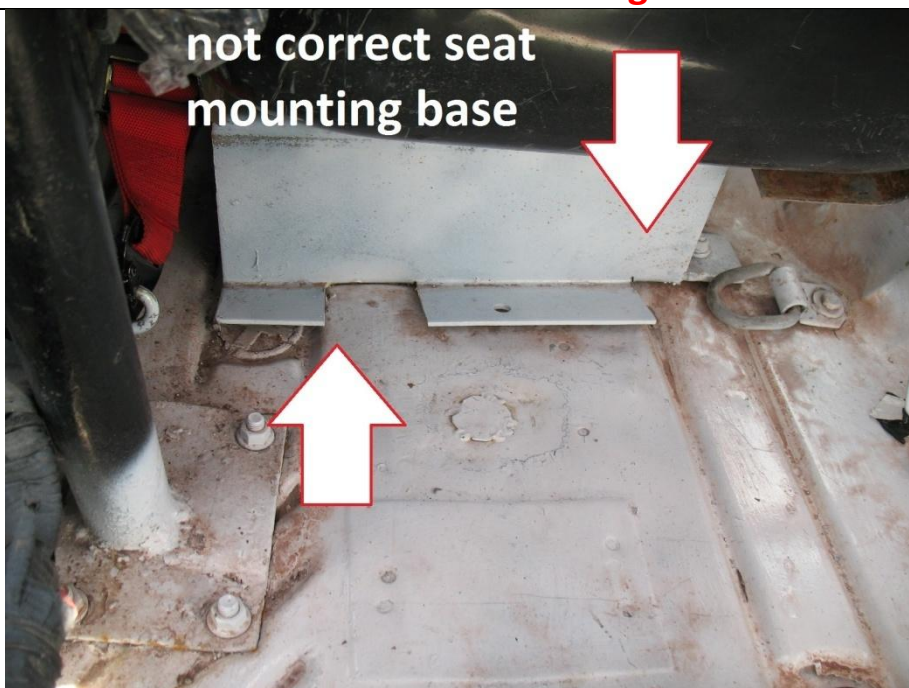
inside cocpit. Otherwise, original Fuel Tank in the original position.

**refuel inside
cockpit
not allowed**

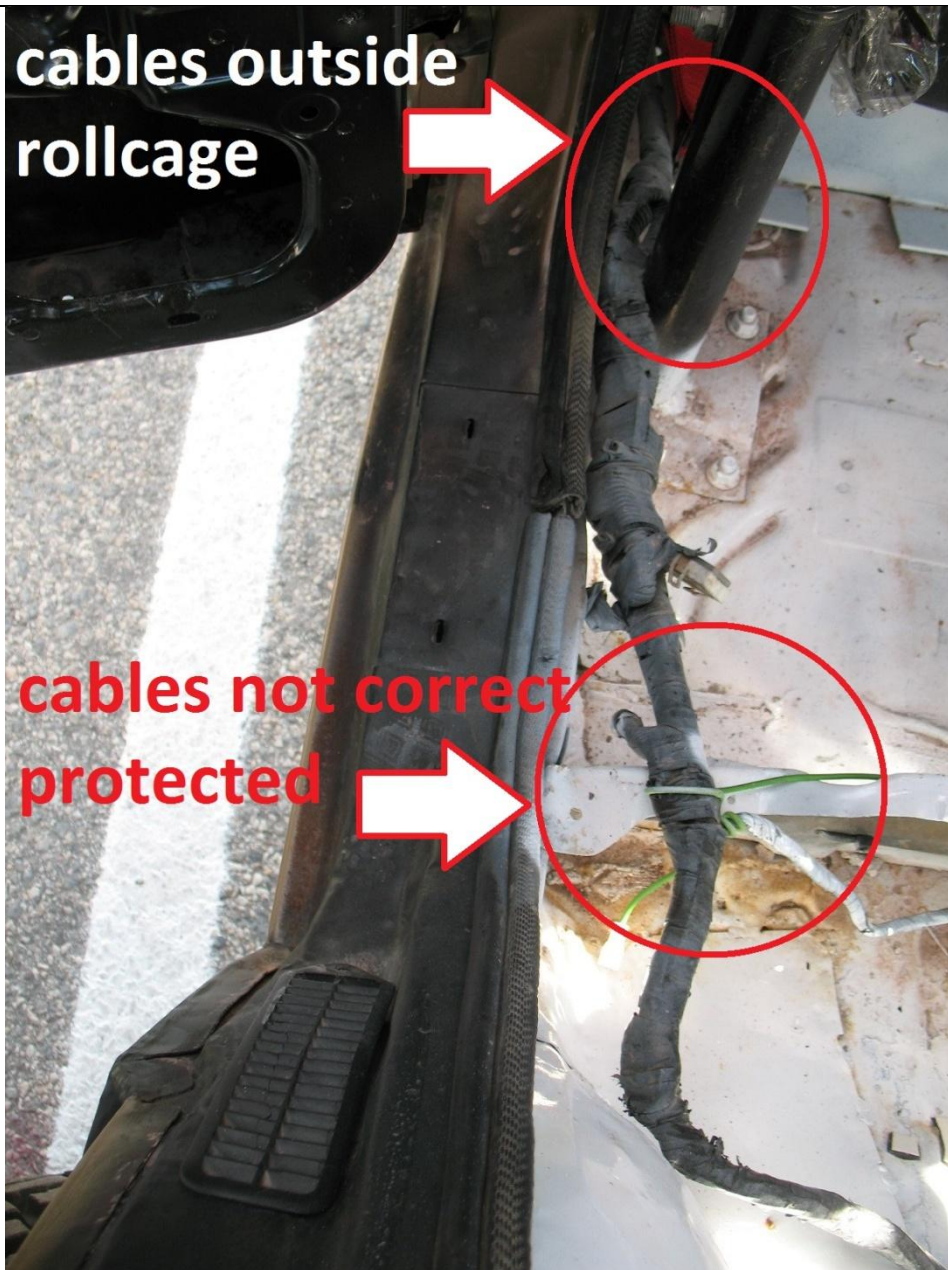


Not correct Seat mounting base

**not correct seat
mounting base**



Not proper Cable installation



Not proper Cable installation

